



New Mexico DEPARTMENT OF
TRANSPORTATION
MOBILITY FOR EVERYONE

NEW MEXICO DEPARTMENT OF TRANSPORTATION -
AVIATION DIVISION



NEW MEXICO
AIRPORT
SYSTEM PLAN
UPDATE

AGENDA

- 1) **Welcome & Introductions** – *Jane Lucero, NMDOT*
- 2) **Consultant Team** – *Kory Lewis, Coffman Associates*
- 3) **Study Process** – *Kory Lewis, Coffman Associates*
- 4) **Inventory Overview** – *Madeline Holliman, Coffman Associates*
- 5) **Committee Discussion**

Consultant Team

Coffman Associates
AIRPORT CONSULTANTS
a **PAPE-DAWSON** company

*Mike Dmyterko
Kory Lewis
Madeline Holliman*

Project Administration, Airport Planning, Forecasts

MOLZENCORBIN

*Mike Provine
Zach Torma
Leah Marquez*

Airport Inventory, Airport Classification
Analysis, System Analysis, Cost Estimates

Kimley»Horn

*Georgia Twyerould
Patrick Heaton
Adam Elsell*

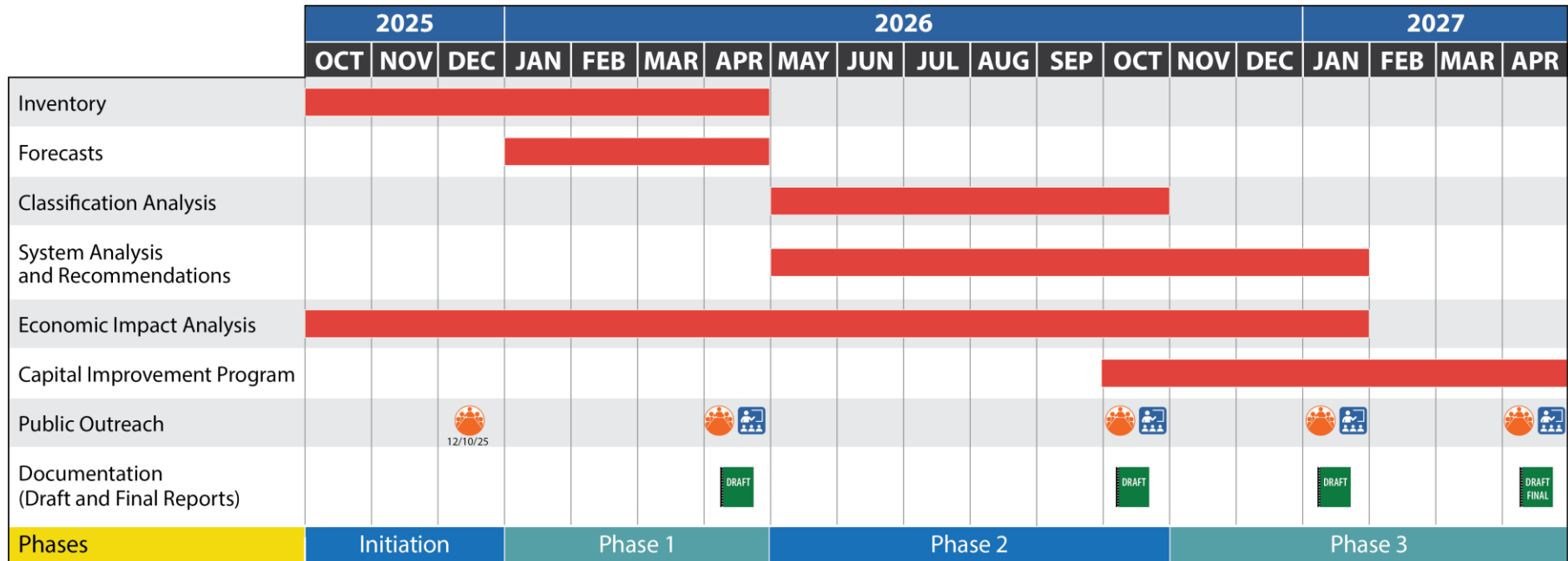
Economic Impact Analysis

McFARLAND JOHNSON

*Rick Lucas
Jason Shevrin
Anthony Shuba*

Data Management Platform

Project Timeline



LEGEND



Planning Advisory Committee

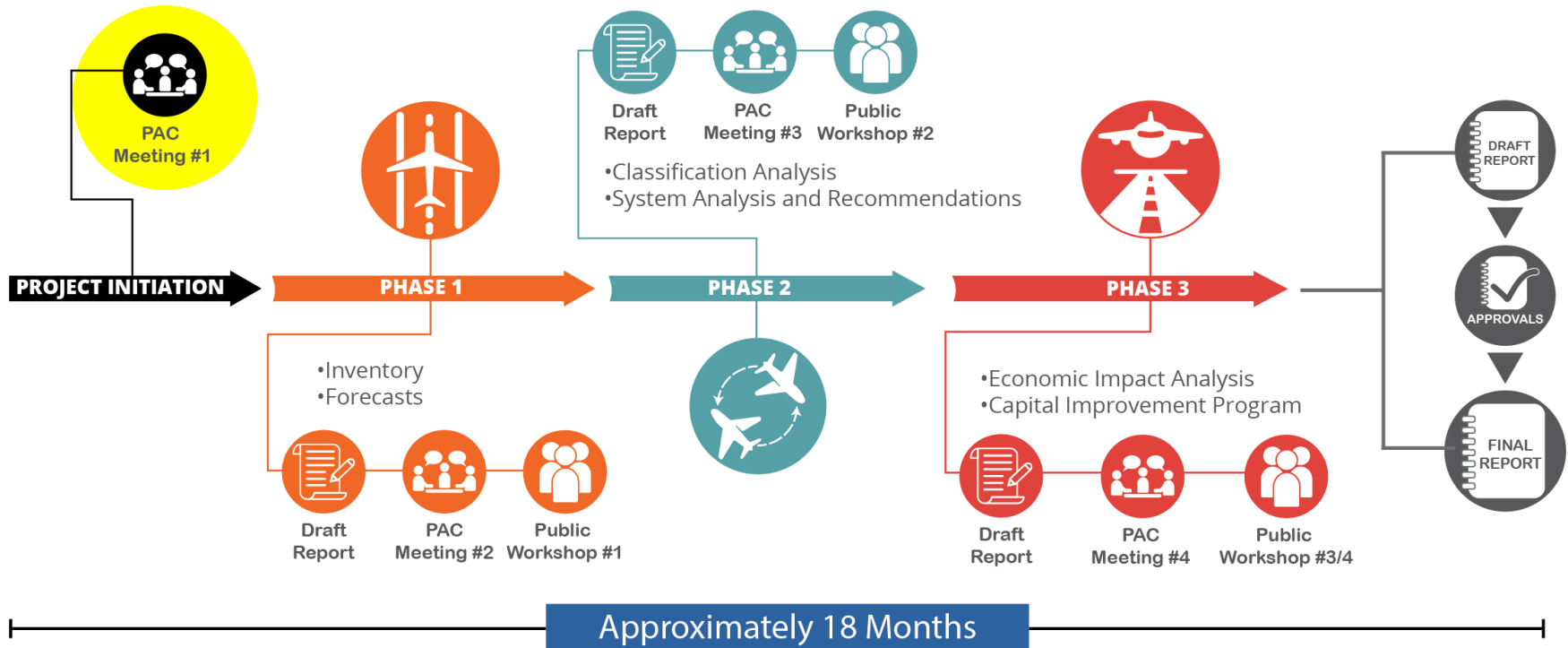


Public Information Workshop



Print/Electronic Document

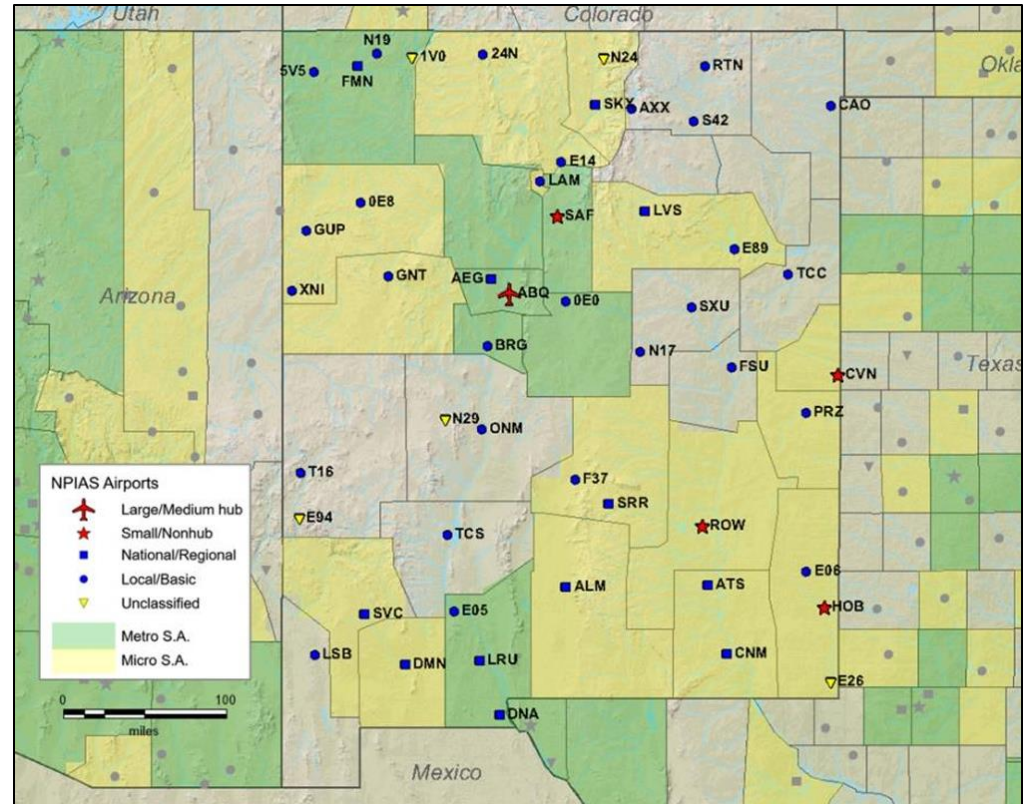
Project Workflow



Aviation System

59 publicly-owned aviation facilities:

- 53 airports
- 4 heliports
- 1 seaplane base
- 1 spaceport



Source: FAA National Plan of Integrated Airport Systems (NPIAS) for 2025-2029

Plan Goals

Goal 1: Increase/Enhance Safety and Security

RSA Compliance Inventory, FAA Form 5010 Review, Land Use Compatibility Issues Analysis

Goal 2: Preserve/Protect Investment in Airports

NPIAS Classification Analysis, Capital Improvement Program, CIP Database Development, Project Cost Estimates, Delineating System

Goal 3: Accommodate Existing and Projected Aviation Demand

Forecasts (2026, 2031, 2036), System Analysis Recommendations

Goal 4: Support Economic Growth of the Community

Economic Impact Analysis, Direct and Indirect Economic Impacts for Each Airport, Total Economic Impact, Overall Statewide Impact

Key Tasks

- 1) Inventory**
- 2) Forecasts**
- 3) Airport Classification Analysis**
- 4) System Analysis Recommendations**
- 5) Economic Impact Analysis**
- 6) Capital Improvement Program**
- 7) Coordination**

Doña Ana County Jetport at Santa Teresa



Alamogordo-White Sands Regional Airport



Angel Fire Airport



Cimarron Heliport



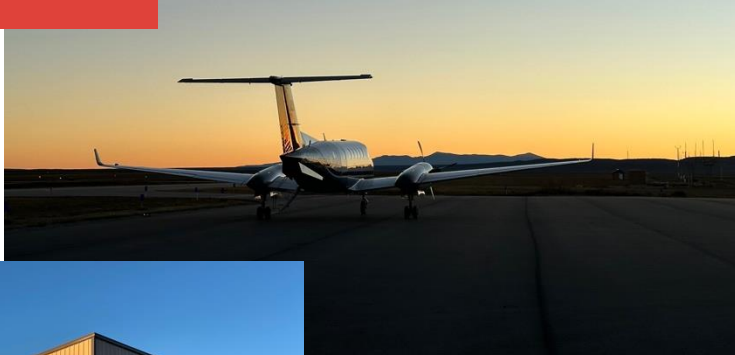
Clayton Municipal Airpark



Glenwood Catron County Airport



Taos Regional Airport



Carizzozo Municipal Airport



Please complete the New Mexico Aviation Economic Impact Airport Manager Survey

We are waiting on responses from 36 airports.

Airports are the best source of data for estimating the system's economic
contributions.


We appreciate your participation in this important study!

Any Questions?

Georgia Twyerould, AICP

Kimley-Horn

 Georgia.Twyerould@kimley-horn.com

 720-773-2682

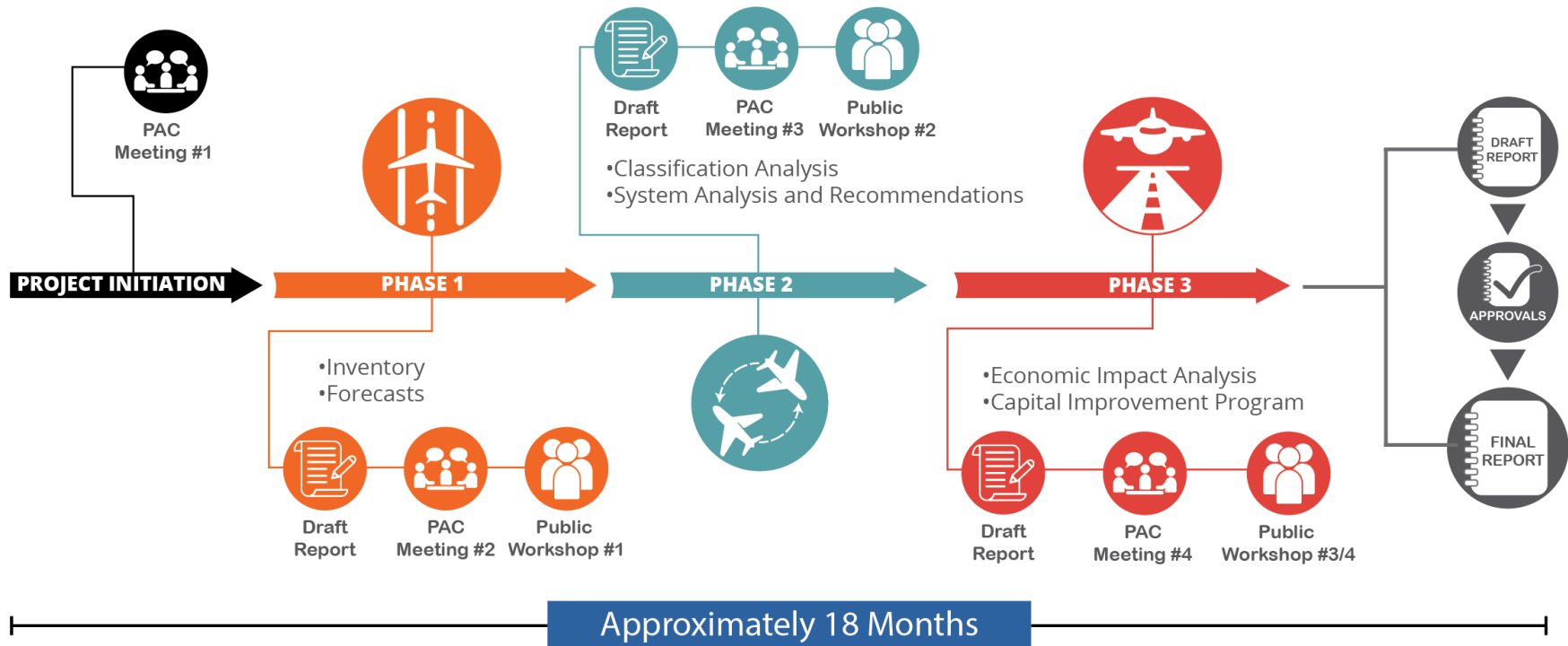


Study Website

<https://nmasp.airportstudy.net>

DISCUSSION

NEXT STEPS



ADJOURNMENT